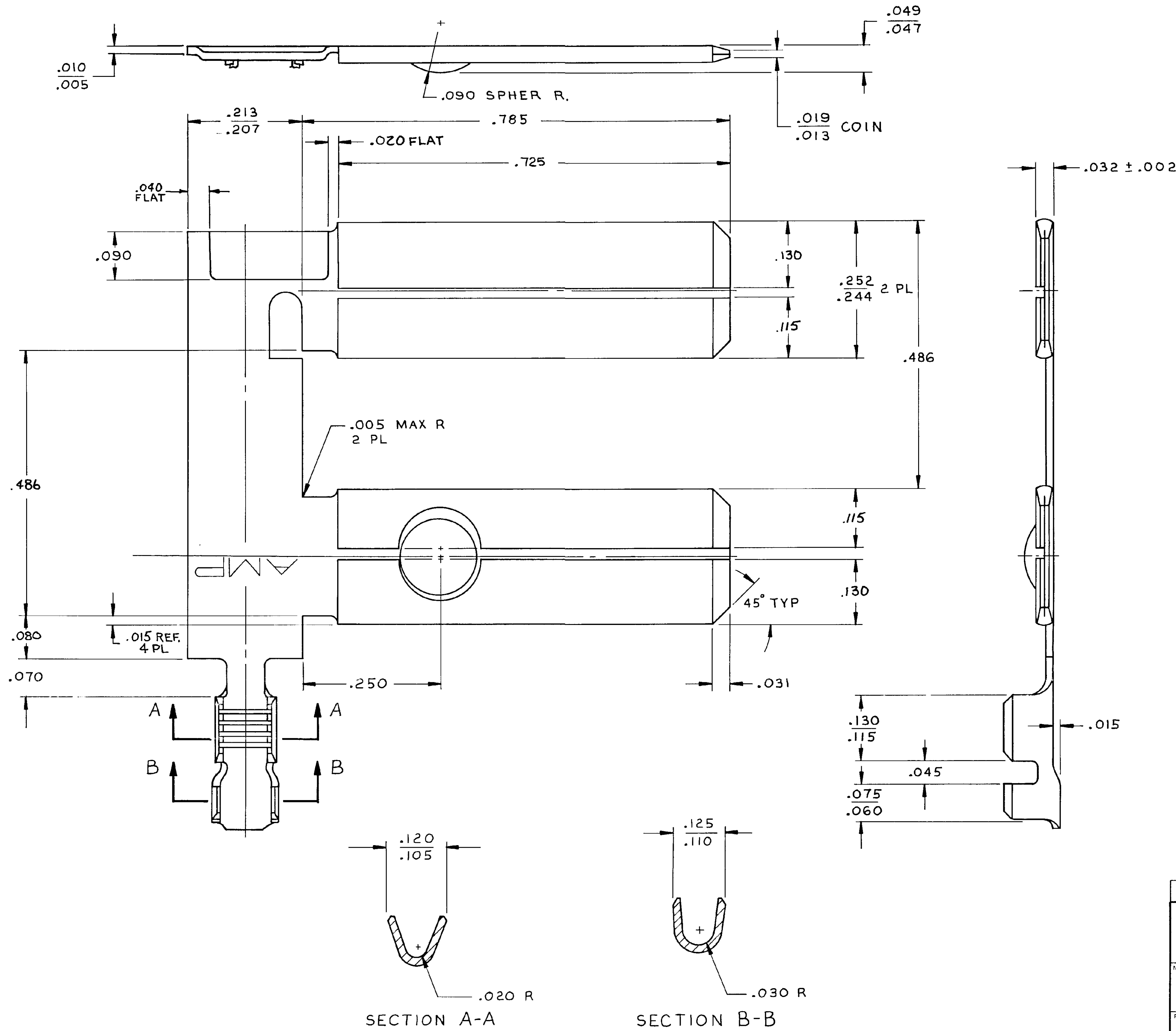


THIS DRAWING IS UNPUBLISHED. RELEASED FOR PUBLICATION
© COPYRIGHT 19 BY AMP INCORPORATED, HARRISBURG, PA. ALL INTERNATIONAL RIGHTS RESERVED. AMP PRODUCTS MAY BE COVERED BY U.S. AND FOREIGN PATENTS AND/OR PATENTS PENDING.

| REVISIONS | | | | | | |
|-----------|---|------|-----|----------------------|---------|-----------------|
| P | F | ZONE | LTR | DESCRIPTION | DATE | APPROVED |
| ✓ | | | 0 | RLSD PER TTI CM85-53 | 9/3/85 | TS/RS |
| | | | A | REV. PER. ECM CM-289 | 8/13/85 | TS/RS |
| ✓ | | | B | REV PER CM 584 | 4-22-86 | KL/RS |
| | | | C | REV PER 0710-0427-95 | 1-22-95 | AMP |
| | | | D | REV PER 0710-0049-96 | 1/14/96 | Per [Signature] |



1. WIRE RANGE : 22-20 AWG .
2. INSULATION RANGE : .070 MAX DIA. .

505081-1 SHOWN

| | | | | | |
|---|--|--|------------------|---|--|
| UNLESS OTHERWISE SPECIFIED DIMENSIONS ARE IN INCHES TOLERANCES ON: DECIMALS : .005 ANGLES : ± 0° 30' | | CONTRACT NO. DP <i>T Beck 9/3/85</i> CHK <i>R. Spring 6-4-85</i> APPD <i>Don Brown 4/26/85</i> APPD | | AMP INCORPORATED Harrisburg, Pa. 17105 | |
| MATERIAL .016 BRASS | | FINISH PRE-TIN | | NAME CONTACT, .248 DUAL BLADE, AMPLIVAR | |
| DESIGN APPD | | SIZE D | FSCM NO 00779 | DRAWING NO 505081 | |
| OTHER APPD | | SCALE 10:1 | | SHEET | |

CUSTOMER DRAWING